

SAFETY TIPS: ELEVATOR / ESCALATOR / MOVING WALK



Disclaimer: Although care has been taken to compile this safety information, we can provide no guarantee or assume no responsibility for its correctness or the sufficiency of information. Additional safety measures may be required under certain circumstances.

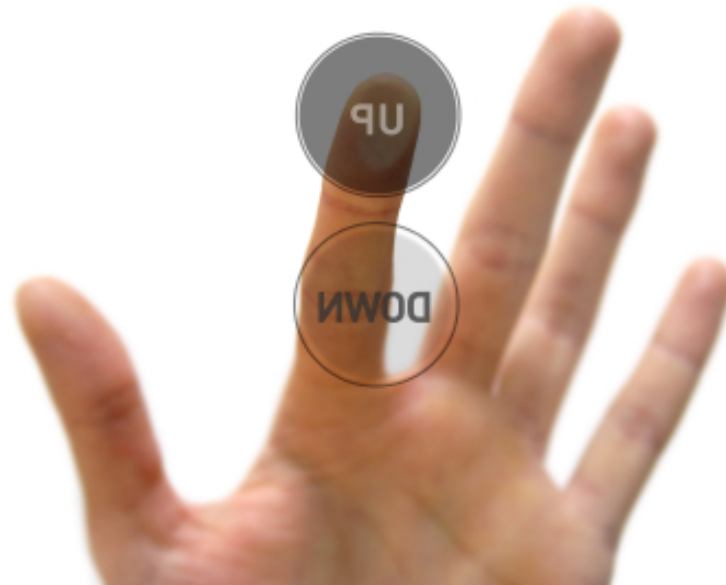
Safety starts with you

- The lift industry invests millions in research to ensure the safe operations of elevator, escalator and moving walk equipment.
- Users of this equipment need to do their part to stay safe



Push Buttons Once

- Only push the direction arrow once, pushing the buttons numerous times can slow down the elevator response



Watch your step

- Watch your step when entering and exiting a lift, the car may not be level with the floor



Elevator Doors

- Use the door open and door close buttons, never attempt to open lift doors with your hands or prevent it closing with hands, feet or packages.
- Stand clear of doors when they are opening and closing



Emergency Stop

- If the elevator stops before it reaches floor level – don't panic. Use the alarm or telephone to call for help.
- Never under any circumstances try to exit an elevator that has not stopped normally.



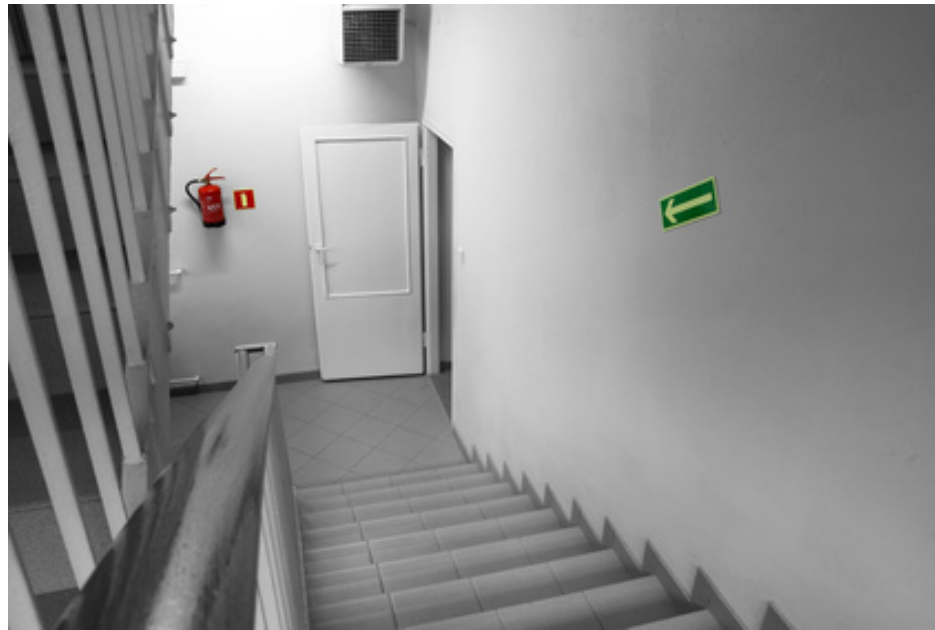
Wait for Help

- If trapped in an elevator, wait for help.
- In power failure situations emergency lighting should be provided.



In the Event of Fire

- Always use the stairs to exit the building and avoid the elevators



Escalator Safety

- Millions of People use Escalators every day Worldwide
- Statistically Escalators are Safer than Stairs
- Falling is the Most Common Escalator Accident



Risks on Escalators

- Poor Eyesight & Visual impairment
- Young Children
- Loose / Long Clothing
- Always wear shoes whilst travelling on an escalator or moving walk. Check shoe laces are tied.



Best Practices

- Check direction of motion and hold the handrail
- Step on and off the escalator promptly. Don't hesitate or block the entrance and exit.
- Stand in the middle of the step away from the sides and facing forwards



Handrails

When travelling with young children, hold the child's hand with one hand and grasp the handrail firmly with the other. Never rest a child or other packages on the handrail while travelling on an escalator.

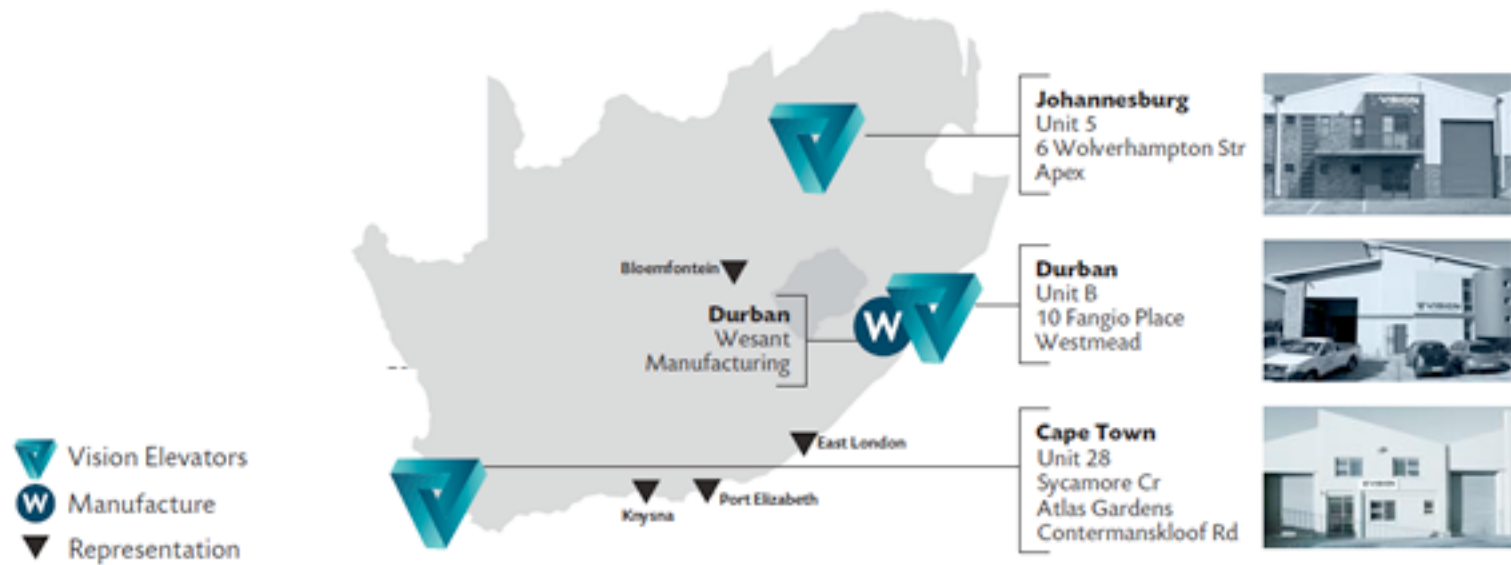


Emergency Stop

In case of emergency push the emergency stop buttons located on the top and bottom landings, this will stop the escalator



We go further



www.visionelevators.co.za

We go further